



A		000488
B	B	200488
H		1812
		595

2011



7
12 15

2011 7 4

.....	4
.....	4
.....	6
.....	9
.....	9
.....	11
.....	11
.....	11
.....	13
.....	16
.....	16
.....	16
.....	20
.....	21
.....	24
.....	25
.....	27
.....	29
.....	29
.....	29
.....	29
.....	39
.....	42
.....	42
.....	43
.....	45

1 2011 4 27

2011 5 18 2010

2 2011 4 28 2011

5 19

www.cninfo.com.cn

3 2011 6 28 " [2011]1019 "

20

1 2011

" 11 "

2 20 20

3 100

4 5

5

6

7

8 2011 7 6

9

10 2012 20

1

2011 7 4

2011 7 6

2011 7 6

1

618

021 3867 4871

021 6887 6202

2

98

010 8802 7099

010 8802 7190

3

6008

16-17

010 8836 6060-8728

010 8836 6650

7

5A1

010 5201 9988

010 6561 2322

12

6

010 6569 3399

010 6569 3838

35

A 8-9

010 8809 5588

010 8809 1199

222

30

010 8520 7788

010 8518 1218

599 1 968

021 5101 9090 010 5760 2288

021 5101 9030 010 5760 2299

110060576018150075611

010 8260 8178 010 8260

	2011 3 31	9,660,164	A
B H		0.47%	

2011
ccxr.com.cn

AA⁺

AA⁺

www.

AA⁺

AA⁺

AA⁺

AA⁺

2011 3 31

377.63

249.67

2011.03.31

	474,000.00	09.08.11-11.08.10	143,180.10	330,819.90
	670,000.00	10.02.10-12.02.09	76,604.08	593,395.92
	330,000.00	10.11.26-11.11.25	61,117.59	268,882.41
	410,500.00	11.01.27-12.01.26	150,121.40	260,378.60
	370,000.00	10.11.28-11.11.28	136,430.76	233,569.24
	108,000.00	10.12.25-11.12.24	53,700.00	54,300.00
	220,000.00	11.01.11-12.01.11	42,000.00	178,000.00
	100,000.00	10.04.30-11.04.29	22,000.00	78,000.00
	125,000.00	09.09.27-12.09.27	100,603.04	24,396.96
	100,000.00	10.08.26-11.08.25	26,592.76	73,407.24
	50,000.00	10.09.30-11.09.29	25,000.00	25,000.00
	40,000.00	11.03.29-12.03.28	-	40,000.00
	30,000.00	10.12.05-11.12.04	9,100.00	20,900.00
	105,963.20	09.12.28-11.12.28	72,120.40	33,842.80

	9,934.05	10.09.15-12.09.14	6,556.40	3,377.65
	13,245.40	09.12.23-11.12.22	13,112.80	132.6
IFC A	16,080.24	05.02.28-15.12.15	13,986.96	2,093.28
DEG	3,547.11	05.08.25-13.06.15	3,085.38	461.73
	600,000.00	08.03.25-23.03.24		

	2010 12 31	2009 12 31	2008 12 31
	1.02	1.38	1.04

= /

= - /

= /

= /

= + /

= /

	18,591,500	27.90%
	66,647,400	100%

1 1996 10
1996 10 27 10
3 0.5 1996 10 27
[1996] 16 17
[1996]70
11,014,565.54 1995 12 31
2.16 5,099,000 1994
9,299,479.96 1995 1 1 12 31
1,000,000 1995 12 31 2.16
4,768,000 9,867,000
99,840,990

2 1997 2
1997 2 4
[1997]64 [1997]33
13,627,342 1997 2 4
10
2.5 1.5 158,855,665

3 1997 4 B
1997 4 30 [1997]26
B 115,000,000
273,855,665

4 1997 11
1997 11 22 1997 10
4 383,397,931

5	2000	11		A				
	2000	11	20			[2000]151		
7000				A				453,397,931
6	2001	5						
					[2001]44			26,709,591
		2001	5	15		B		
7	2001							
		2000					10	1
								3
								498,737,724
8	2003							
		2002					10	2
								0.5
		6						897,727,903
9	2005							
		2004					10	2
								1
		3						1,346,592,379
10	2005							
					[2004]147		2004	9
								15
	2000							100
20					2004	9	15	
					2009	9	15	
	2004	9	30					
					2005	3	15	
					2009	9	15	
								2009
9	15				2005	5	19	
								2004
					2005	3	15	
								9.99
					2005	5	20	
								2004
						6.59	2006	7
								7
	2005							6.47

	2006	9	21		5.50
				2007	5 14
					359,754,087
2007			340,675,786		
	11	2006			
	2006	2	28		
				2006	3 27
				2006	3 28

35,570,000 H 320,130,000 H

H 35,570,000 H 391,270,000

H 2008 6 18

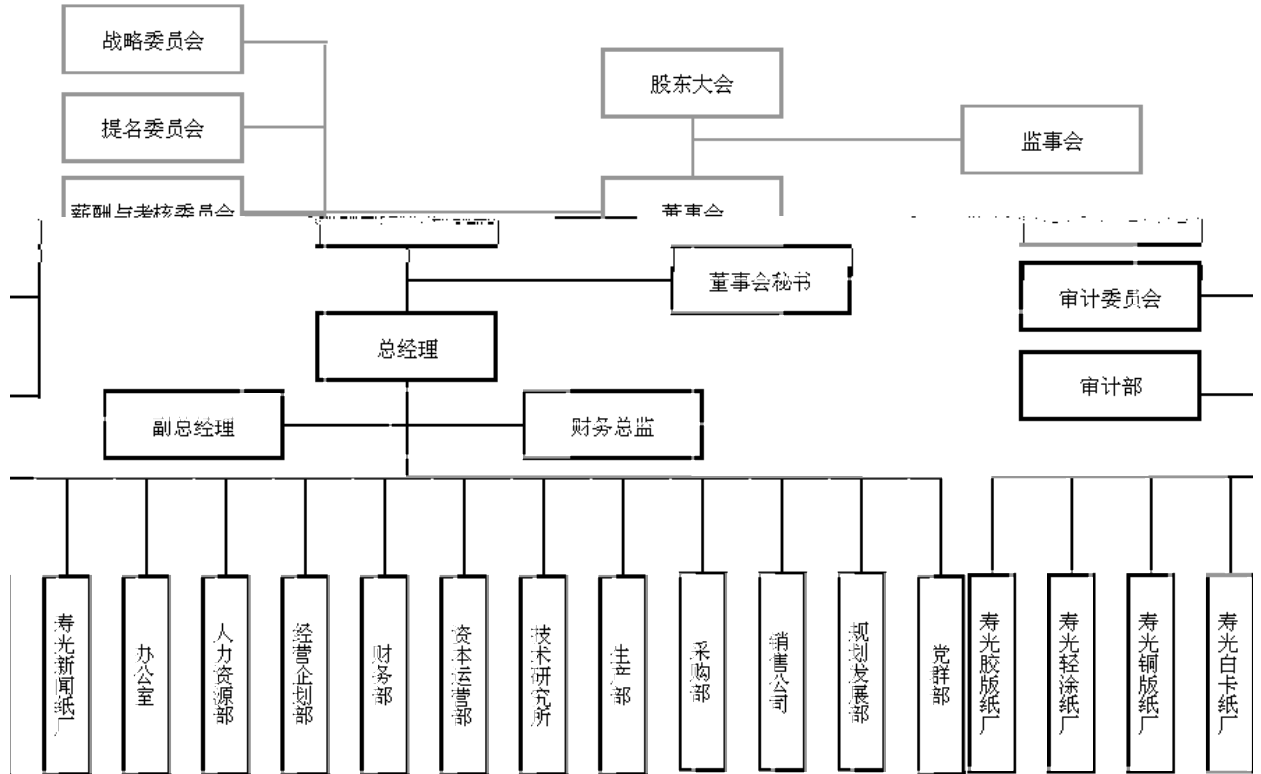
2011 3 31

	2011 3 31	
	303,011,972	14.69%
	293,003,657	14.21%
	10,008,315	0.48%
	1,759,033,969	85.31%
	810,266,484	39.30%
	557,497,485	27.04%
	391,270,000	18.97%
	2,062,045,941	100.00%

2011 3 31

10

1		389,860,000	
2		293,003,657	
3	PLATINUM ASIA FUND	43,480,377	
4	BBH BOS S/A FIDELITY FD - CHINA FOCUS FD	29,800,890	
5	BILL & MELINDA GATES FOUNDATION TRUST	24,036,202	
6	HTHK-MANULIFE CHINA VALUE FUND	22,892,182	
7	MANULIFE GLOBAL FUND	20,324,321	
8	-005L-FH002	18,819,737	
9		14,999,927	
10	DRAGON BILLION CHINA MASTER FUND	13,853,877	



2011 3 31

--

--	--	--	--	--	--	--	--	--	--	--

2011 3 31

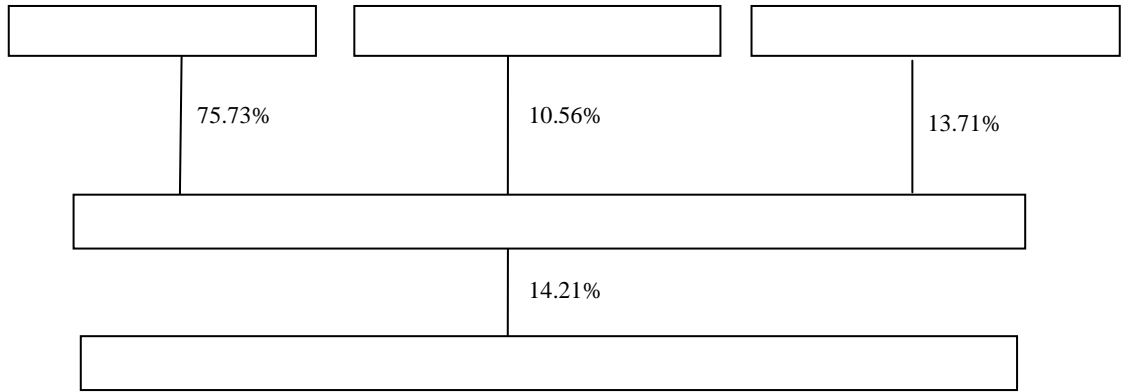
2010

1-2-22

	1997.12	21,136.70	50.93%			247,424.34	171,299.48	3,545.18
	2000.3.27	37,620.00	100%			147,666.19	133,661.51	2,272.82
	1994.6.28	9,955.31	86.71%			57,886.54	56,480.78	5,584.12
	2005.9.1	150,000.00	100%			282,679.48	135,023.52	-6,645.68
	2007.6.29	17,741.94	35.79%			49,828.37	47,962.27	2,847.98
	2002.11.4	17,200	51.00%			335,090.62	160,241.30	14,147.47
	2001.10.2 3	8,163.30	76.73%			29,072.63	49,569.95	8,211.93
	2002.5.13	1,059	68%			49.84	51.74	-41.50
	1999.10.2 3	1,600	75%			14,755.41	14,642.24	540.01
	2008.9.1	1,000	100%			2,876.43	-	-1,199.40
	2008.9.26	2,000	100%			3,308.37	-	-48.95
	2008.1.26	1,000	100%			17,611.48	113.85	-1,197.13
	2005.6.6	1,500	100%			6,045.82	3,745.13	-523.39
	2008.7	20,800	100%			51,120.40	28,698.70	-1,159.27

	2006.11.1 3	10	100%			63,753.04	192,314.60	1,230.87
	2006.1.23	110,000	100%			593,873.64	44.82	5,401.39
	2007.5.25	2,000	75%			111,191.51	88,802.50	3,756.70
	2005.6.6	1,391	70%			30,359.47	5,671.20	-2,580.42
	2007.3.14	1,000	100%			10,224.04	18,917.69	712.57
	2009.6.30	150,000	100%			405,468.37	-	-440.75
	2009.11.1 7	150	100%			149.94	-	-0.06
	2010.3.17	10,000	100%			204,216.23	257,950.58	26.80

75.73%



		15		7	
3		5	5	1	
	2		11	1	
		2010		2010	12

31

1				46	2010 2013	4 4	-	498.00	6,334,527	-
2				53	2010 2013	4 4	-	298.00	2,423,640	-
3				38	2010 2013	4 4	-	142.75	471,818	-
4				37	2010 2013	4 4	-	107.85	437,433	-
5				44	2010 2013	4 4	-	108.04	185,700	-
6				49	2010 2013	4 4	-	115.53	628,915	-
7				49	2010 2013	4 4	-	130.16	123,007	-
8				47	2010 2013	4 4	-	5.00	-	-
9				55	2010 2013	4 4	-	5.00	-	-
10				42	2010 2013	4 4	-	5.00	-	-
11				48	2010 2013	4 4	-	5.00	-	-
12				47	2010 2013	4 4	-	5.00	-	-
13				46	2010 2013	4 4	-	5.00	-	-

19				73	2010 2013	4 4	-	2.50	-	-
20				68	2010 2013	4 4	-	2.50	-	-
21				45	2010 2013	4 4	-	109.96	429,348	-
22				48	2010 2013	4 4	-	76.97	708,441	-
23				48	2010 2013	4 4	-	103.77	146,700	-
24				47	2010 2013	4 4	-	47.76	-	-
25				39	2010 2013	8 8	-	91.19	-	-
26				45	2010 2013	8 8	-	87.55	102,393	-
27				45	2010 2013	4 4	-	166.00	1,238	-
28				42	2010 2013	4 4	-	101.85	245,674	-
29				57	2011 2014	3 3	-	-	-	-
30				35	2011 2014	3 3	-	-	-	-
31				37	2011 2014	3 3	-	-	-	-
32				35	2010 2013	4 4	-	105.58	-	-
33				41	2010 2013	4 4	-	12.85	-	-

2011 3 30

2011

3 30

2010

	2010		2009		2008	
	32	28	37	29	55	35
	42	39	48	44	58	40
	12	11	14	11	21	15
	83	79	72	60	52	52
	45	42	49	46	57	52
	26	25	31	23	33	28
	48	42	46	37	49	44
	62	61	49	48	17	40
	350	327	346	299	342	306

	2010	2009	2008	
2010	2009	2008		2011
	2011			

	2011 3 31	2010 12 31	2009 12 31	2008 12 31
	172,524.85	195,185.49	289,292.32	285,341.81
	-	-	1,490.00	-
	274,024.28	276,238.99	270,479.91	97,400.98
	231,695.99	212,257.88	152,899.15	175,240.93
	79,127.85	92,435.45	100,077.29	46,252.63
	24,606.22	11,763.44	8,121.06	13,588.96
	369,612.45	304,707.82	222,657.95	339,779.29
	105,872.70	65,857.21	9,075.62	15,199.30
	1,257,464.35	1,158,446.29	1,054,093.30	972,803.92
	6,033.94	6,720.19	8,098.47	9,267.38
	2,425.36	2,468.82	2,642.65	2,816.47
	1,302,573.17	1,288,235.84	1,352,959.09	1,421,344.18
	910,256.26	787,151.26	199,796.13	43,137.93
	17,745.41	11,648.11	4,291.30	4,207.99
	145,086.35	145,945.32	131,342.89	127,707.66
	2,028.38	2,028.38	2,028.38	2,028.38
	18,334.23	17,643.70	3,241.19	3,722.77
	14,395.85	14,751.05	13,142.60	12,791.64
	76,639.36	72,674.26	49,672.50	30,121.27
	2,495,518.32	2,349,266.92	1,767,215.18	1,657,145.66
	3,752,982.67	3,507,713.21	2,821,308.49	2,629,949.57

	2011 3 31	2010 12 31	2009 12 31	2008 12 31
	567,275.84	359,415.72	310,315.38	151,694.50
	-	-	645.00	19.89
	82,589.63	21,875.72	54,453.25	36,762.76
	308,682.87	270,806.47	212,286.09	264,230.82
	24,963.73	41,024.36	23,312.37	10,169.36
	12,696.34	16,942.67	24,550.13	19,020.91
	14,449.80	13,402.94	13,749.11	4,996.60
	-	-	505.00	-

	-	-	7.88	3.61
	69,190.26	58,205.25	32,122.06	34,622.62
	142,349.25	143,284.15	34,535.35	103,812.52

	2011	2010	2009	2008
	-686.25	-1,376.28	-1,568.91	-2,308.18
	-686.25	-1,386.31	-1,568.91	-2,316.76
	22,779.73	143,375.07	98,256.58	129,277.17
	9,369.37	17,941.80	20,173.84	27,436.62
	174.40	5,081.42	1,138.16	1,179.86
	-	4,212.89	1,049.65	500.74
	31,974.70	156,235.46	117,292.26	155,533.93
	6,718.01	26,069.64	21,901.12	29,579.79
	25,256.69	130,165.81	95,391.14	125,954.15
	23,541.03	116,334.11	83,594.80	107,529.17
	1,715.66	13,831.71	11,796.34	18,424.97
	0.11	0.56	0.41	0.57
	-	-	-	-
	-12.86	-85.50	-2.03	57.56
	25,243.83	130,080.31	95,389.12	126,011.71
	23,528.17	116,248.61	83,592.77	107,586.73
	1,715.66	13,831.71	11,796.34	18,424.97

H

2011

2010

2009

2008

	459,254.36	1,705,436.03	1,497,886.15	1,685,492.82
	359,262.91	1,333,067.97	1,096,173.24	1,212,317.56
	20,706.02	85,875.77	58,386.78	69,657.48
	46,112.83	137,508.32	90,903.03	131,293.56
	9,665.72	63,951.07	88,519.67	78,810.14
	435,747.48	1,620,403.13	1,333,982.73	1,492,078.74
	23,506.89	85,032.89	163,903.43	193,414.08
	-	100.00	200.00	-
	-	2.00	-	8.59
	95.39	8,762.42	4,041.77	60.38
	301.60	3,533.70	6,893.91	5,782.32
	396.99	12,398.12	11,135.68	5,851.29
	163,111.04	650,764.97	223,267.12	154,279.88
	-	101.00	600.00	1956.46
	-	-	713.18	-
	163,111.04	650,865.97	224,580.31	156,236.35
	-162,714.05	-638,467.84	-213,444.63	-150,385.05
	-	-	-	271,119.19
	463,233.06	632,226.58	1,123,228.01	600,205.15
	-	-	-	189,240.00
	-	437,690.00	120,000.00	-

	-	42,897.01	-	-
	463,233.06	1,112,813.59	1,243,228.01	1,060,564.34
	178,374.70	510,491.06	927,517.35	754,663.04
	8,039.27	99,138.00	64,892.56	85,890.26
	154,965.00	-	190,000.00	50,000.00
	42,069.50	-	43,055.01	3,904.36
	383,448.47	609,629.06	1,225,464.92	894,457.66
	79,784.59	503,184.53	17,763.08	166,106.68
	-256.67	-959.40	-246.38	-1,760.44
	-59,679.24	-51,209.82	-32,024.50	207,375.27
	185,523.60	236,733.42	268,757.92	61,382.65
	125,844.36	185,523.60	236,733.42	268,757.92

	2011 3 31	2010 12 31	2009 12 31	2008 12 31
	33,329.61	70,410.92	203,793.03	214,243.97
	218,488.07	152,734.94	191,564.60	46,568.11
	84,636.18	162,193.96	138,720.85	193,728.03
	83,718.38	91,963.85	82,681.70	43,875.94
	2,550.00	2,550.00	18,836.30	16,487.50
	540,065.68	477,307.46	204,512.34	93,646.85
	119,764.76	79,844.76	90,147.17	168,265.71
	177,872.13	179,962.58	168,800.00	98,200.00
	6,913.47	-	3,592.79	5,274.72

12ET642.P <</MCEB56>>4.ÑDC21480.38 541.99444895.960042Ñ

	319,268.28	316,157.80	461,906.47	306,961.36
	1,262,794.93	1,190,116.06	992,596.01	942,954.11
	206,204.59	206,204.59	206,204.59	206,204.59
	618,421.60	618,421.60	618,421.60	618,421.60
	103,432.11	103,432.11	89,473.95	81,328.73
	363,162.61	341,993.46	278,231.37	215,234.62
	1,291,220.91	1,270,051.77	1,192,331.51	1,121,189.54
	2,554,015.84	2,460,167.83	2,184,927.52	2,064,143.65

	2011	2010	2009	2008
	192,178.58	1,395,964.52	1,335,797.82	1,355,778.23
	155,580.80	1,175,798.64	1,161,973.46	1,194,992.27
	967.86	849.95	45.26	30.66
	6,191.99	43,772.42	45,828.97	34,078.79
	10,068.71	43,574.67	28,589.74	20,783.03
	5,658.03	20,895.84	26,606.48	19,796.17
	-2,516.44	1,402.09	2,160.36	1,193.25

	21,169.14	139,581.63	81,452.20	101,733.93
	-	-	-	-
	21,169.14	139,581.63	81,452.20	101,733.93

	2011	2010	2009	2008
	179,730.27	1,316,418.28	1,180,901.35	1,281,608.06
	-	-	-	-
	7,724.36	5,699.04	23,294.70	16,342.19
	187,454.63	1,322,117.32	1,204,196.05	1,297,950.25
	117,555.23	1,092,863.37	944,961.84	1,085,161.77
	5,927.39	34,454.11	23,187.36	27,273.56
	19,531.45	65,989.64	52,417.43	78,247.24
	18,260.06	245,829.83	166,793.64	51,120.56
	161,274.14	1,439,136.95	1,187,360.28	1,241,803.13
	26,180.49	-117,019.63	16,835.77	56,147.12
	2,090.45	41,939.42	169,200.00	233,200.00

	12,248.05	54,526.79	14,502.08	18,732.83
	-	1,900.48	2,746.43	119.31
	-	1,439.00	612.31	564.32
	14,338.50	99,805.69	187,060.81	252,616.46
	14,068.90	19,073.55	25,871.94	10,894.49
	31,953.34	259,100.00	185,350.00	361,810.00
	-	-	-	-
	46,022.24	278,173.55	211,221.94	372,704.49
	-31,683.74	-178,367.86	-24,161.13	-120,088.03
	-	-	-	271,119.19
	229,690.72	323,939.74	921,511.45	533,225.84
	-	437,690.00	120,000.00	189,240.00
	-	40,998.47	-	5,055.71
	229,690.72	802,628.21	1,041,511.45	998,640.74
	95,903.73	515,773.62	799,726.12	689,097.99
	5,315.78	82,961.58	47,616.85	59,677.10

	154,965.00	-	190,000.00	-
	12,837.10	-	46,025.02	-
	269,021.60	598,735.20	1,083,367.98	748,775.08
	-39,330.89	203,893.01	-41,856.53	249,865.66
	-35.26	-889.15	-214.07	-1,519.94
	-44,869.40	-92,383.64	-49,395.96	184,404.81
	66,220.96	158,604.60	208,000.56	23,595.76
	21,351.56	66,220.96	158,604.60	208,000.56

1

	2010 12 31	2009 12 31	2008 12 31
	0.91	1.49	1.19
	0.67	1.18	0.77
%	56.50	47.77	46.68
	6.56	6.30	5.95
	2010	2009	2008
	5.17	4.18	4.75
	8.44	8.18	8.18
	5.66	5.06	5.84

	193,381.10	157,646.86	204,199.61
	0.41	0.79	0.94
	0.56	0.41	0.57
	0.56	0.41	0.57
	-0.25	-0.16	1.01
	37,145.64	40,354.6	48,665.68
	5.21	3.91	4.20

2

	2010 12 31	2009 12 31	2008 12 31
	1.39	2.08	1.38
	1.30	1.91	1.12
%	48.38	45.43	45.68
	6.16	5.78	5.44
	2010	2009	2008
	13.83	8.83	9.73
	8.54	7.42	7.32
	10.03	7.58	7.84

/

/

/

/

/

/

/

=

/

/

2010

80%

	85,874.50	818,306.08	10.49%
	50,015.16	489,206.21	10.22%
	34,767.72	487,096.79	7.14%
	71,883.08	956,806.38	7.51%
	41,184.34	685,395.53	6.01%
	68,033.77	1,225,476.29	5.55%

3 20 2011 3 31

4 80%

20%

5 2011 3 31

	3,752,982.67	3,792,982.67	40,000
	2,202,208.94	2,242,208.94	40,000
%	58.68	59.11	0.43
%	63.96	55.69	-10.27
	0.89	1.04	0.15

	2,554,015.84	2,594,015.84	40,000
	1,262,794.93	1,302,794.93	40,000
%	49.44	50.22	0.78
%	74.72	60.14	14.58
	1.34	1.39	0.05

2011

2011

595

0536 215 6108

0536 215 6111

7

12 15

010 5832 8888

010 5832 8954

www.cninfo.com.cn

（本页无正文，为《山东晨鸣纸业集团股份有限公司公开发行2011年公司债券募

集说明书摘要》）